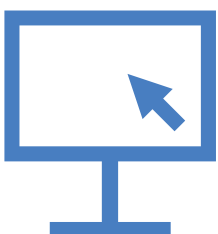


AUTODESK® REVIT® PLUG-IN

# **QUICK GUIDE**

## Geberit BIM Catalogue



## Impressum

---

These instructions and the software described in it form part of the license agreement and may be used or copied only in accordance with the license terms. The content of these instructions is intended exclusively for information purposes, can be modified without notification and does not entail an obligation on the part of Geberit International AG. Geberit International AG provides no warranty nor guarantee with regard to the correctness and accuracy of the data in these instructions.

Any mention of company names in examples of specifications is exclusively for demonstration purposes. Any reference to actual existing companies is not intended, with the exception of the following.

The following companies and brands are mentioned in these instructions:

- Geberit and the Geberit logo are trademarks of the Geberit Group in Switzerland and in other countries
- Microsoft, Windows 10 and Windows 7 are trademarks of Microsoft Corporation in the USA and other countries
- Revit® is a trademark of Autodesk GmbH in the United Kingdom and other countries

© Copyright 2019, Geberit International AG. All rights reserved.

Geberit International AG

Schachenstrasse 77

CH-8645 Jona

E-mail: [documentation@geberit.com](mailto:documentation@geberit.com)





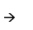
# TABLE OF CONTENTS

<b>1 About this document</b> .....	<b>4</b>
1.1 Characters and Symbols .....	4
1.2 Highlighted Passages .....	4
<b>2 Geberit BIM Catalogue</b> .....	<b>5</b>
<b>3 Technical prerequisites</b> .....	<b>5</b>
<b>4 Installation</b> .....	<b>6</b>
<b>5 Operation</b> .....	<b>7</b>
5.1 Selecting regional settings.....	7
5.2 Selecting products .....	9
5.3 Customising view in the Products of category area.....	13
5.4 Inserting products .....	14
5.5 Anonymising product information .....	14
5.6 Setting height offset for installation elements .....	15
5.7 Setting reference plane for height offset.....	16
<b>6 Additional information</b> .....	<b>17</b>
<b>7 Support</b> .....	<b>18</b>

# 1 ABOUT THIS DOCUMENT

## 1.1 Characters and Symbols

The following characters and symbols are used in this Help function:

Symbol	Designation	Meaning
	Hint	Hints for an easier or better approach
	Note	Basic information on a specific procedure
 1. 2.	Action	Instructions for an action consisting of only one step. Instructions for an action consisting of several steps are numbered
	Prerequisite	Prerequisite must be fulfilled
	Result	Result of an action

## 1.2 Highlighted Passages

Keyboard shortcuts appear in the text as follows: **STRG + C**. The corresponding shortcut for keyboards with English keys appears in brackets (**CTRL+C**).

Software dialog elements are shown as follows: **Tab** or **Window** or **Menu entry**.

Software buttons are shown as follows: **OK**.

## 2 GEBERIT BIM CATALOGUE

The Geberit BIM Catalogue is a plug-in for Autodesk® Revit®.

This plug-in provides the Revit® user with a component library of Geberit products for their project planning.

The data is called up directly from the Geberit PIM system and imported into Revit®.

## 3 TECHNICAL PREREQUISITES

The following technical prerequisites are necessary for the installation of the plug-in.

They apply for the plug-in version 1.0.0.

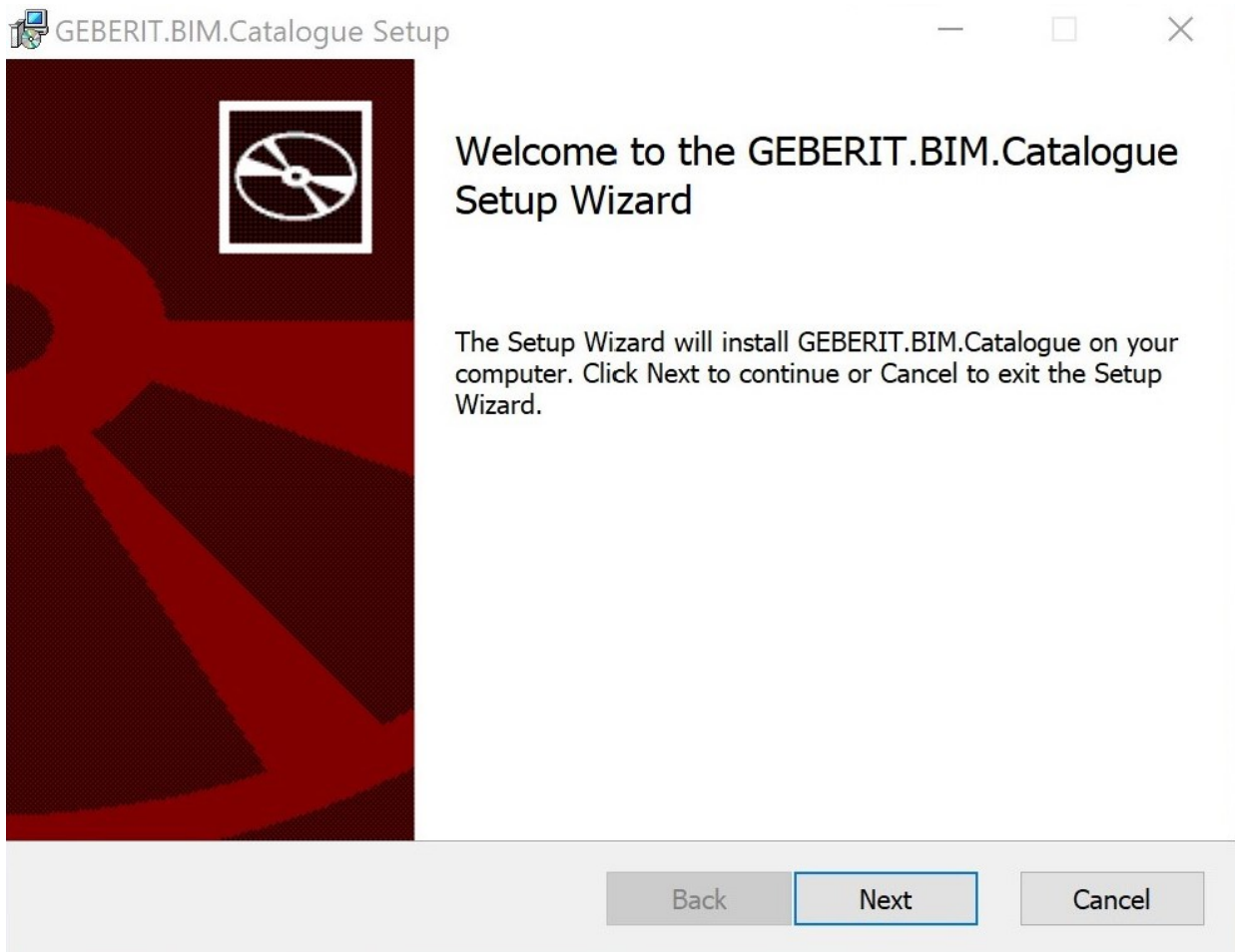
Operating system:	Windows 7 SP1 / 10
Autodesk Revit® version:	2018 / 2019 / 2020

## 4 INSTALLATION



Administrator rights for the PC are required for the installation of the plug-in.

1. Call up the following page in the browser and download the Geberit BIM Catalogue plug-in:  
**[www.international.geberit.com/bim](http://www.international.geberit.com/bim)**.
2. Unzip the downloaded zip file.
3. Double-click on the **Setup.exe** installation file
  - ✓ The installation wizard starts.



4. Follow the instructions on the display.

## 5 OPERATION

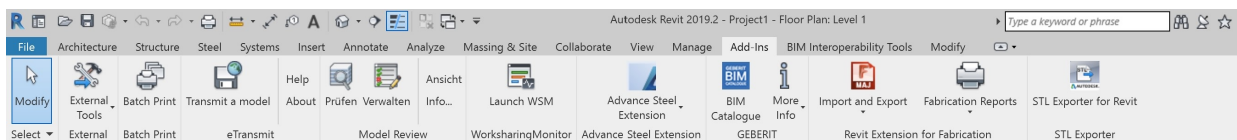
### 5.1 Selecting regional settings

Before you can search for Geberit products in Autodesk® Revit® and insert them in your BIM planning, you need to define regional settings. These settings are used to select the available products in the Geberit product range of the selected country.

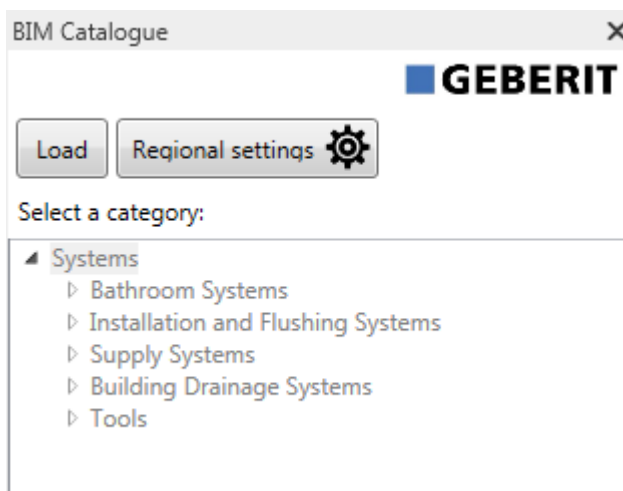


Geberit recommends that the regional settings within a project are not changed.

1. Click on the **Additional modules** tab in the Autodesk® Revit® ribbon.



2. Click on **BIM Catalogue**.  
✓ The **BIM Catalogue** window appears.

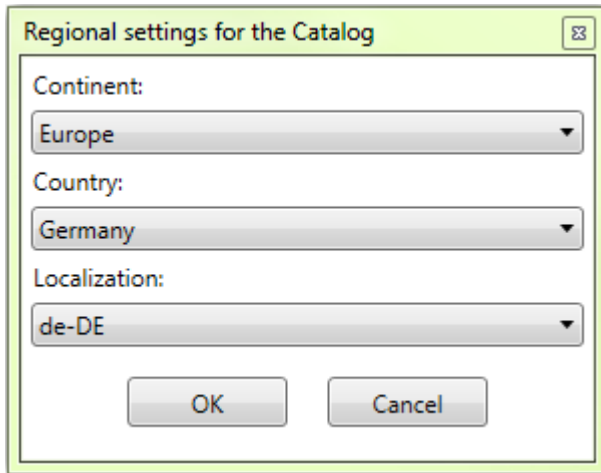


## 5 Operation

### 5.1 Selecting regional settings

3. Click on **Regional settings**.

- ✓ The **Regional settings** window appears.



4. Select the **Continent**, **Country** and **Localisation**.

5. Click on **OK** to confirm the setting.

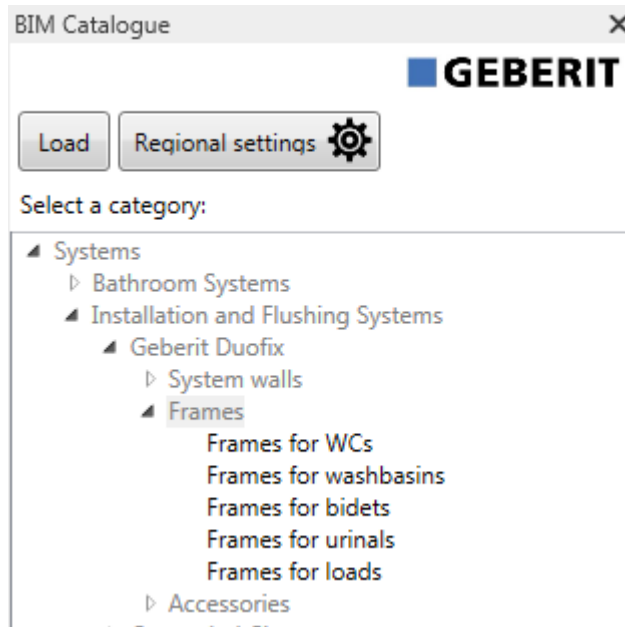
6. Click on **Load** in the **BIM Catalogue** window to load the available product range of the selected country.



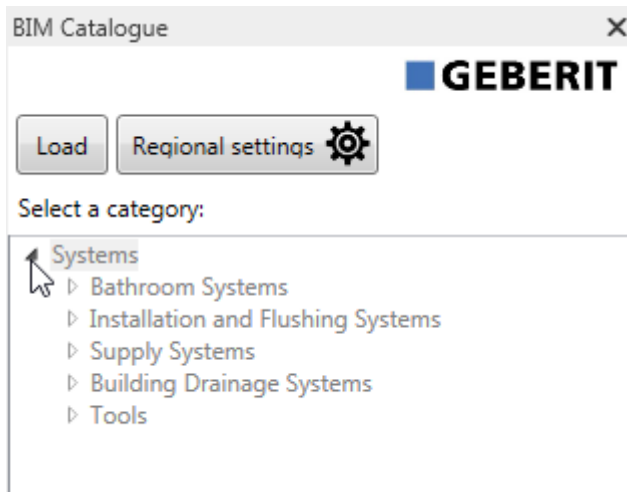
## 5.2 Selecting products

All of the products available in the product range are listed in a tree structure. The tree structure corresponds to the structure in the online catalogue of the respective country.

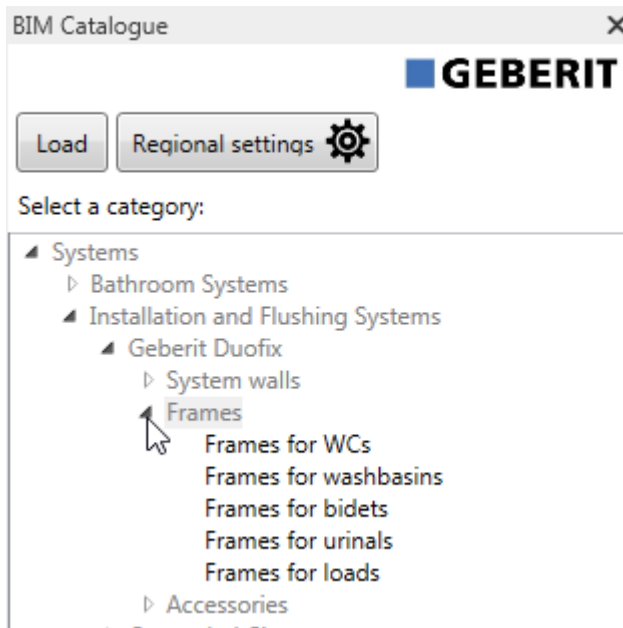
Product categories are shown in grey in the tree structure and selectable product groups are shown in black.



1. Click on the triangle (▸) in the tree structure to open the **Systems** entry.

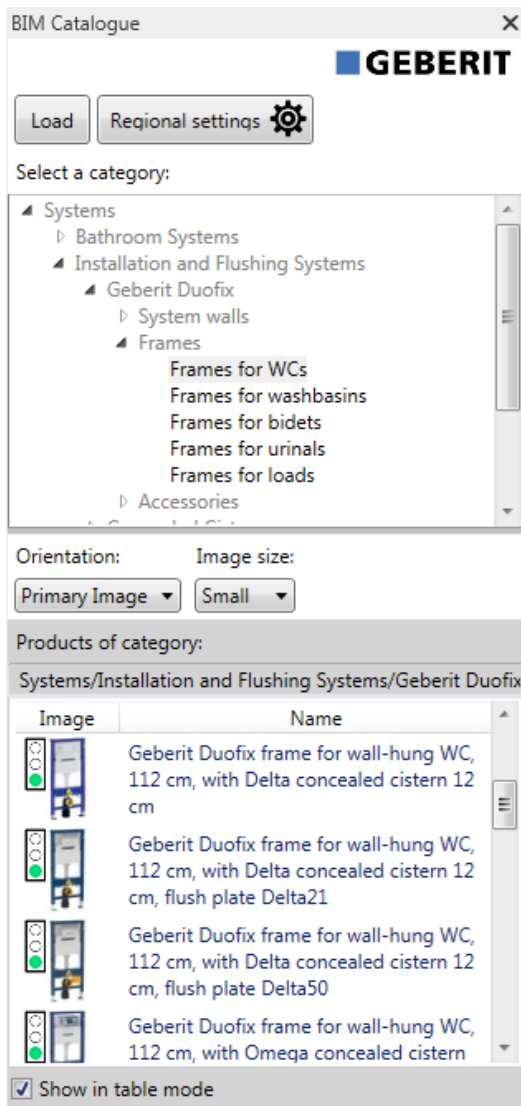


2. Open the desired product category in the same way and navigate to the desired product group.






- ✓ The available products in the **Products of category** area appear as soon as you have marked a product group.

5 Operation  
5.2 Selecting products



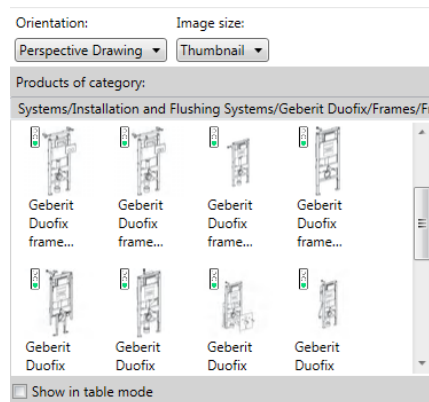
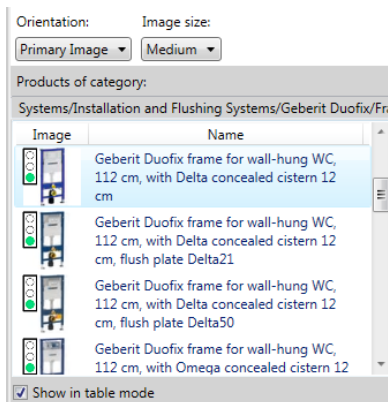
The traffic light in the **Image** column indicates whether the product is BIM-enabled and whether a Revit® family is available to download.

Symbol	Description
	The product is BIM-enabled and can be used. A Revit® family is available.
	The product is BIM-relevant but cannot be used because a Revit® family is not yet available.
	The product is not relevant for the digital planning.

If necessary, you can customise the view in the **Products of category** area (see "Customising view in the Products of category area", page 13).

## 5.3 Customising view in the Products of category area

The products in the **Products of category** area are shown as standard as a table and with the respective product photo. If necessary, you can customise this view using the **Orientation** and **Image size** selection fields as well as by activating or deactivating the **Show in table mode** checkbox.



## 5.4 Inserting products

1. Double-click on the desired product in the **Products of category** area.
  - ✓ All BIM-enabled products are downloaded from the Geberit PIM system.
2. Click on the desired position in your BIM planning to insert the product.



If you add a pipe from the supply systems area or building drainage systems, the most important fittings required for the routing presettings are loaded as well.

## 5.5 Anonymising product information

Public sector tenders usually require manufacturer-neutral planning. The plug-in allows you to switch between neutral (LOD300) or manufacturer-related product information (LOD400).

1. Mark one product in a family in your BIM planning.
2. Click on **Edit type** in the **Properties** window.
  - ✓ The **Type properties** window appears.
3. Activate the **LOD300** checkbox in the **Identity Data** area.
  - ✓ Information, such as **Article number**, **Manufacturer**, **Model** and **Description** are replaced by neutral information for all the available instances of the product.

Identity Data	
Article number	n/a
LOD300	<input checked="" type="checkbox"/>
LOD400	<input type="checkbox"/>
Type Image	
Keynote	
Model	-
Manufacturer	generic
Type Comments	
URL	
Description	concealed cistern support frame for

4. Click on **OK** to confirm the setting.

## 5.6 Setting height offset for installation elements

The Geberit Duofix installation elements can be aligned vertically using height-adjustable leg supports. A height offset of 0–20 cm can be balanced out in the floor construction.

The plug-in allows you to set this height offset individually for each instance of a product.

1. Mark one product or several products in a Duofix family in your BIM planning.
2. Navigate to the parameter **SH** in the **Construction** area in the **Properties** window.

Plumbing Fixtures (1)		Edit Typ
<b>Constraints</b> ^		
angle	45.00°	
spacing_230	<input type="checkbox"/>	
spacing_180	<input checked="" type="checkbox"/>	
top	<input type="checkbox"/>	
front	<input checked="" type="checkbox"/>	
warning	-	
Level	Level 1	
Host	Level : Level 1	
Offset	0.0	
<b>Construction</b> ^		
SH	200.0	
Above finished floor	<input type="checkbox"/>	

3. Enter the desired value for the height offset in [mm].
4. Click on **Apply** to accept the settings.

## 5.7 Setting reference plane for height offset

The information in the reference plane is important so that your BIM planning correctly implements the height offset of the Geberit Duofix installation elements.

The reference plane can be the unfinished floor (default setting) or the finished floor.

1. Mark one product or several products in a Duofix family in your BIM planning.
2. Navigate to the **Construction** area in the **Properties** window.
3. Activate the **Above finished floor** checkbox.
  - ✓ The finished floor reference plane is activated.

Plumbing Fixtures (1)		Edit Typ
<b>Constraints</b>		
angle	45.00°	
spacing_230	<input type="checkbox"/>	
spacing_180	<input checked="" type="checkbox"/>	
top	<input type="checkbox"/>	
front	<input checked="" type="checkbox"/>	
warning	-	
Level	Level 1	
Host	Level : Level 1	
Offset	0.0	
<b>Construction</b>		
SH	0.0	
Above finished floor	<input checked="" type="checkbox"/>	

4. Click on **Apply** to accept the settings.



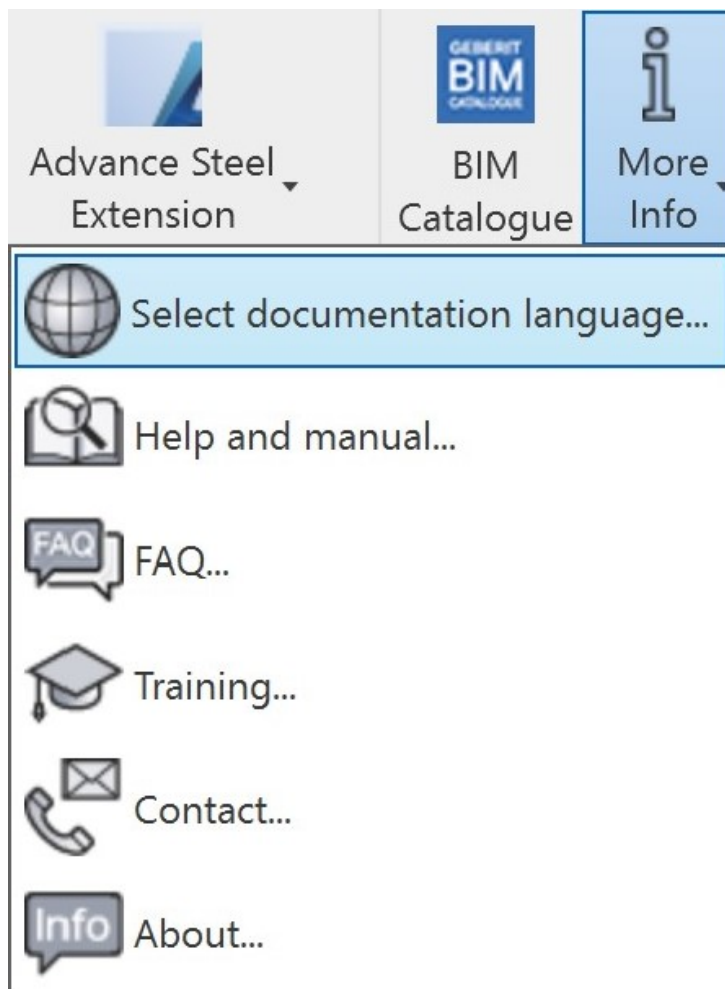
## 6 ADDITIONAL INFORMATION

The following additional information is available for the Geberit BIM Catalogue plug-in:

- **Select documentation language ...**  
Documentation language
- **Help and manual...**  
Quick guide
- **FAQ...**  
Frequently asked questions and answers
- **Training...**  
Training videos
- **Contact...**  
Contact details for technical support
- **About...**  
Information on the plug-in version

1. Click on the **More Info** button.

✓ Menu opens.



2. Click on a symbol to select additional information.

## 7 SUPPORT

You can contact the support team on the following E-mail address if you have any questions on how to use the Geberit BIM Catalogue plug-in:

Gulf Region:	<a href="mailto:bim.support.uae@geberit.com">bim.support.uae@geberit.com</a>
Southern Africa:	<a href="mailto:bim.support.za@geberit.com">bim.support.za@geberit.com</a>
Rest of Middle East and Africa / Latin America:	<a href="mailto:bim.support.int@geberit.com">bim.support.int@geberit.com</a>



Geberit International AG  
Schachenstrasse 77, CH-8645 Jona  
[documentation@geberit.com](mailto:documentation@geberit.com)  
[www.geberit.com](http://www.geberit.com)